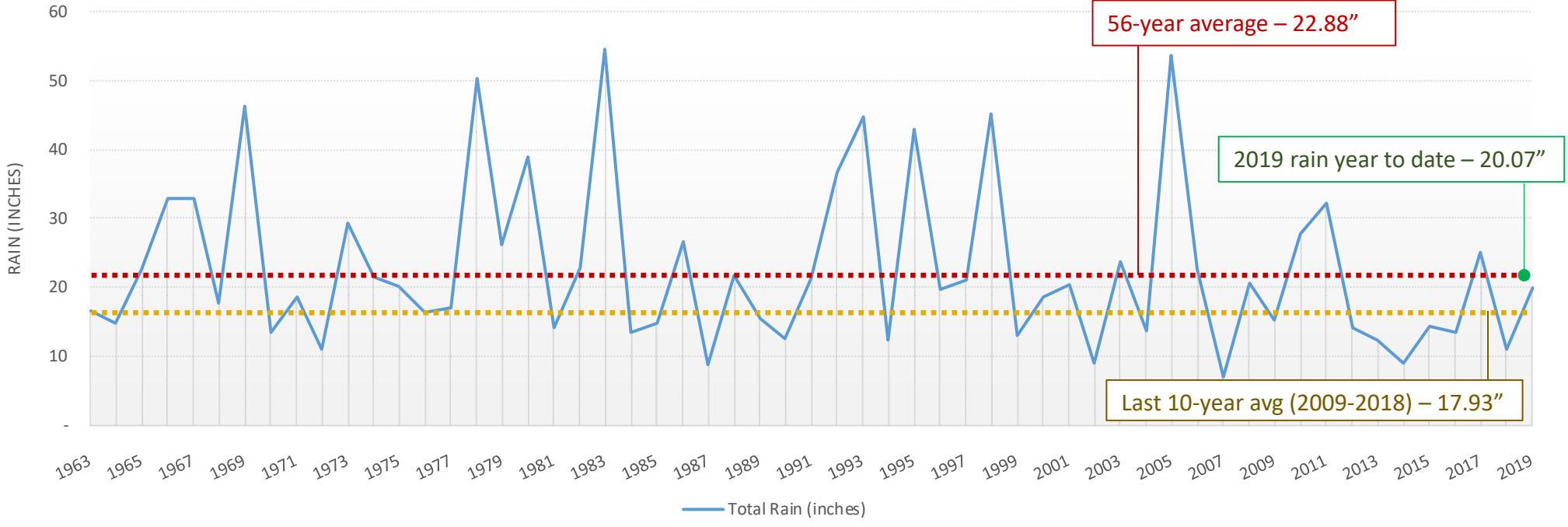
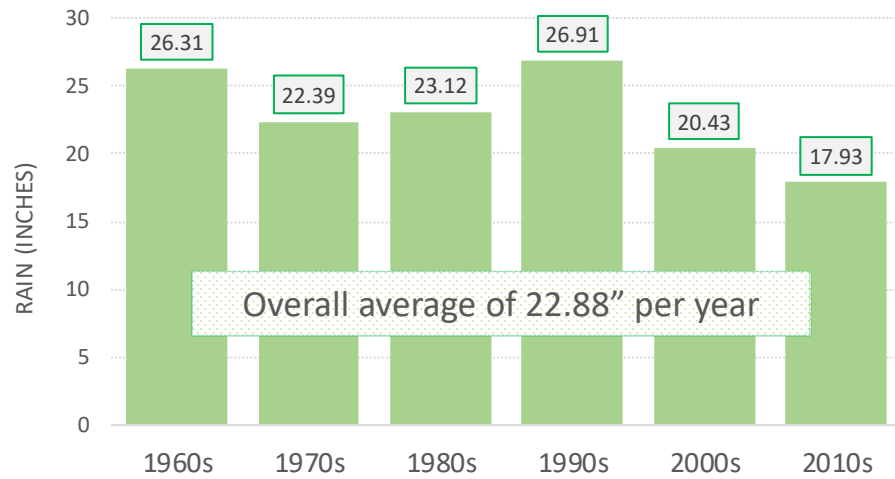


Rain by Rain Year, 1963 - 2019 (inches)



Rain Average by Decade (inches)



**Crescenta Valley Water District
Recorded Rainfall by Decade**

Rain Year (Oct thru Sept)	October	November	December	January	February	March	April	May	June	July	August	September	Total Rain (inches)
2019	0.45	2.53	3.03	8.29	6.40	N/A	N/A	N/A	N/A	N/A	N/A	N/A	20.70
2018	0.14	0.02	-	2.88	0.23	7.05	-	0.70	-	-	-	-	11.02
2017	0.66	1.44	4.57	11.71	5.29	0.65	0.15	0.29	-	-	-	0.20	24.96
2016	0.32	0.14	1.53	5.41	0.94	3.83	0.75	0.32	0.10	-	-	0.15	13.49
2015	-	1.38	5.38	0.94	0.92	0.76	0.35	0.93	0.04	1.58	-	2.00	14.28
2014	0.27	1.15	0.56	0.06	3.79	2.37	0.82	0.01	-	-	0.04	-	9.07
2013	1.29	2.05	3.71	2.21	0.62	0.99	0.19	0.99	-	0.20	-	-	12.25
2012	2.18	2.11	0.93	1.61	0.25	3.94	2.71	0.44	-	-	-	-	14.17
2011	2.19	1.76	13.64	0.65	5.85	7.34	0.02	0.72	0.13	-	-	0.01	32.31
2010	2.08	0.24	5.19	7.93	7.40	1.41	3.29	0.13	-	0.01	-	-	27.68
Total Inches	9.58	12.82	38.54	41.69	31.69	28.34	8.28	4.53	0.27	1.79	0.04	2.36	179.93
Avg. Per Year	0.96	1.28	3.85	4.17	3.17	2.83	0.83	0.45	0.03	0.18	0.00	0.24	17.99
2009	0.09	3.71	3.34	0.83	6.27	0.61	0.07	-	0.23	-	-	-	15.15
2008	0.51	0.58	3.17	13.59	2.00	0.14	0.01	0.60	-	-	-	-	20.60
2007	0.01	0.10	0.59	0.82	2.55	0.27	0.78	-	-	0.06	-	1.77	6.95
2006	2.33	0.16	0.18	5.14	4.57	5.37	3.85	0.74	0.11	-	0.06	0.10	22.61
2005	10.42	0.59	10.87	15.20	11.85	3.16	0.82	0.40	-	-	0.09	0.36	53.76
2004	-	0.98	2.62	0.52	7.84	1.41	0.33	-	-	-	-	-	13.70
2003	0.01	4.88	3.49	0.11	7.04	4.15	2.16	1.56	0.32	-	-	-	23.72
2002	0.10	2.38	2.11	2.16	0.40	0.63	0.16	0.46	0.18	-	-	0.38	8.96
2001	1.70	-	0.02	4.28	9.70	1.96	2.43	-	-	0.17	-	-	20.26
2000	-	0.42	0.15	1.37	9.90	2.87	3.12	0.18	-	-	0.09	0.47	18.57
Total Inches	15.17	13.80	26.54	44.02	62.12	20.57	13.73	3.94	0.84	0.23	0.24	3.08	204.28
Avg. Per Year	1.52	1.38	2.65	4.40	6.21	2.06	1.37	0.39	0.08	0.02	0.02	0.31	20.43
1999	-	1.68	0.44	3.00	1.13	1.83	3.18	0.27	1.30	-	-	0.13	12.96
1998	0.05	3.24	3.63	4.67	19.79	4.56	3.03	5.30	0.55	-	0.01	0.30	45.13
1997	1.66	2.98	7.32	7.73	0.61	-	-	-	0.11	0.04	0.03	0.52	21.00
1996	-	0.10	1.43	3.14	10.22	3.59	1.18	0.03	-	-	-	-	19.69
1995	1.35	0.84	1.38	21.92	3.30	10.44	1.46	0.38	1.84	-	-	-	42.91
1994	0.21	1.37	1.44	0.77	3.89	2.94	0.83	0.61	0.15	-	-	-	12.21
1993	3.00	-	7.31	15.06	13.66	4.23	-	0.07	1.36	0.03	-	0.02	44.74
1992	1.01	0.01	4.58	3.37	15.33	10.82	0.26	0.36	0.06	0.96	-	-	36.76
1991	-	1.19	0.14	2.15	5.55	12.07	0.02	0.04	0.02	0.06	-	0.03	21.27
1990	0.73	0.82	-	3.10	3.96	0.34	1.93	1.25	0.01	-	0.29	-	12.43
Total Inches	8.01	12.23	27.67	64.91	77.44	50.82	11.89	8.31	5.40	1.09	0.33	1.00	269.10
Avg. Per Year	0.80	1.22	2.77	6.49	7.74	5.08	1.19	0.83	0.54	0.11	0.03	0.10	26.91

Rain Year (Oct thru Sept)	October	November	December	January	February	March	April	May	June	July	August	September	Total Rain (inches)
1989	-	2.01	5.91	0.87	3.73	1.33	0.03	0.20	0.12	-	-	1.16	15.36
1988	4.51	2.96	2.21	3.34	3.53	0.95	3.73	0.14	0.01	-	0.23	0.18	21.79
1987	0.22	1.25	0.47	2.03	1.75	1.75	0.32	0.21	0.12	0.25	0.29	0.11	8.77
1986	1.06	5.32	0.35	4.52	5.25	5.82	1.00	-	-	0.09	-	3.30	26.71
1985	0.10	2.74	5.99	0.81	2.59	2.17	0.02	0.28	-	0.01	-	0.14	14.85
1984	1.90	4.21	5.09	0.06	-	0.60	0.77	-	0.07	-	0.15	0.49	13.34
1983	-	8.45	2.64	9.31	6.47	15.40	5.68	1.37	0.10	-	2.78	2.38	54.58
1982	0.52	2.67	0.65	4.30	0.96	7.77	3.20	0.50	0.17	-	-	2.10	22.84
1981	-	-	1.29	4.25	1.43	5.36	1.76	-	-	-	-	-	14.09
1980	1.58	0.74	1.02	10.71	17.28	5.84	1.37	0.30	-	-	-	-	38.84
Total Inches	9.89	30.35	25.62	40.20	42.99	46.99	17.88	3.00	0.59	0.35	3.45	9.86	231.17
Avg. Per Year	0.99	3.04	2.56	4.02	4.30	4.70	1.79	0.30	0.06	0.04	0.35	0.99	23.12
1979	0.39	1.99	3.08	7.33	4.22	8.95	-	0.21	0.08	-	0.03	-	26.28
1978	0.05	0.22	7.32	9.03	13.13	15.08	4.30	-	-	-	-	1.10	50.23
1977	0.16	0.84	0.91	5.58	0.28	2.18	-	4.71	0.13	-	2.15	-	16.94
1976	0.13	-	0.46	-	5.58	3.29	1.66	0.21	0.13	0.02	0.40	4.56	16.44
1975	1.27	0.38	4.17	0.20	3.69	7.27	2.76	0.25	0.09	-	-	-	20.08
1974	0.20	2.82	1.14	11.01	0.15	5.63	0.52	0.10	-	-	-	-	21.57
1973	0.17	3.51	2.61	4.73	13.03	5.01	0.09	0.04	0.06	-	-	-	29.25
1972	1.31	0.54	8.33	-	0.09	-	0.04	0.07	0.29	-	0.38	0.01	11.06
1971	0.09	8.30	6.23	1.06	1.15	-	0.62	1.04	0.13	-	-	-	18.62
1970	-	2.10	0.05	3.12	5.50	2.46	0.19	-	0.01	-	-	-	13.43
Total Inches	3.77	20.70	34.30	42.06	46.82	49.87	10.18	6.63	0.92	0.02	2.96	5.67	223.90
Avg. Per Year	0.38	2.07	3.43	4.21	4.68	4.99	1.02	0.66	0.09	0.00	0.30	0.57	22.39
1969	0.19	0.24	1.02	27.15	14.41	1.48	1.34	0.04	0.49	0.06	-	-	46.42
1968	-	9.36	1.30	1.22	1.54	3.31	0.97	-	-	-	-	-	17.70
1967	0.12	4.28	10.57	6.01	0.22	5.50	5.90	0.36	-	-	-	-	32.96
1966	-	19.38	9.31	0.77	1.67	0.69	-	0.62	-	-	-	0.53	32.97
1965	0.50	3.04	3.60	1.18	1.19	1.22	9.25	0.17	0.16	0.08	0.11	2.10	22.60
1964	1.26	4.35	0.05	3.34	-	2.92	1.90	0.62	0.40	-	0.04	-	14.88
1963	0.17	-	-	0.85	6.69	2.84	3.20	0.08	0.72	-	-	2.09	16.64
Total Inches	2.24	40.65	25.85	40.52	25.72	17.96	22.56	1.89	1.77	0.14	0.15	4.72	184.17
Avg. Per Year	0.32	5.81	3.69	5.79	3.67	2.57	3.22	0.27	0.25	0.02	0.02	0.67	26.31
Years of Data	57	57	57	57	57	56	56	56	56	56	56	56	
Total Inches	48.66	130.55	178.52	273.40	286.78	214.55	84.52	28.30	9.79	3.62	7.17	26.69	1,292.55
Avg. Per Year	0.85	2.29	3.13	4.80	5.03	3.83	1.51	0.51	0.17	0.06	0.13	0.48	22.88