

Legend

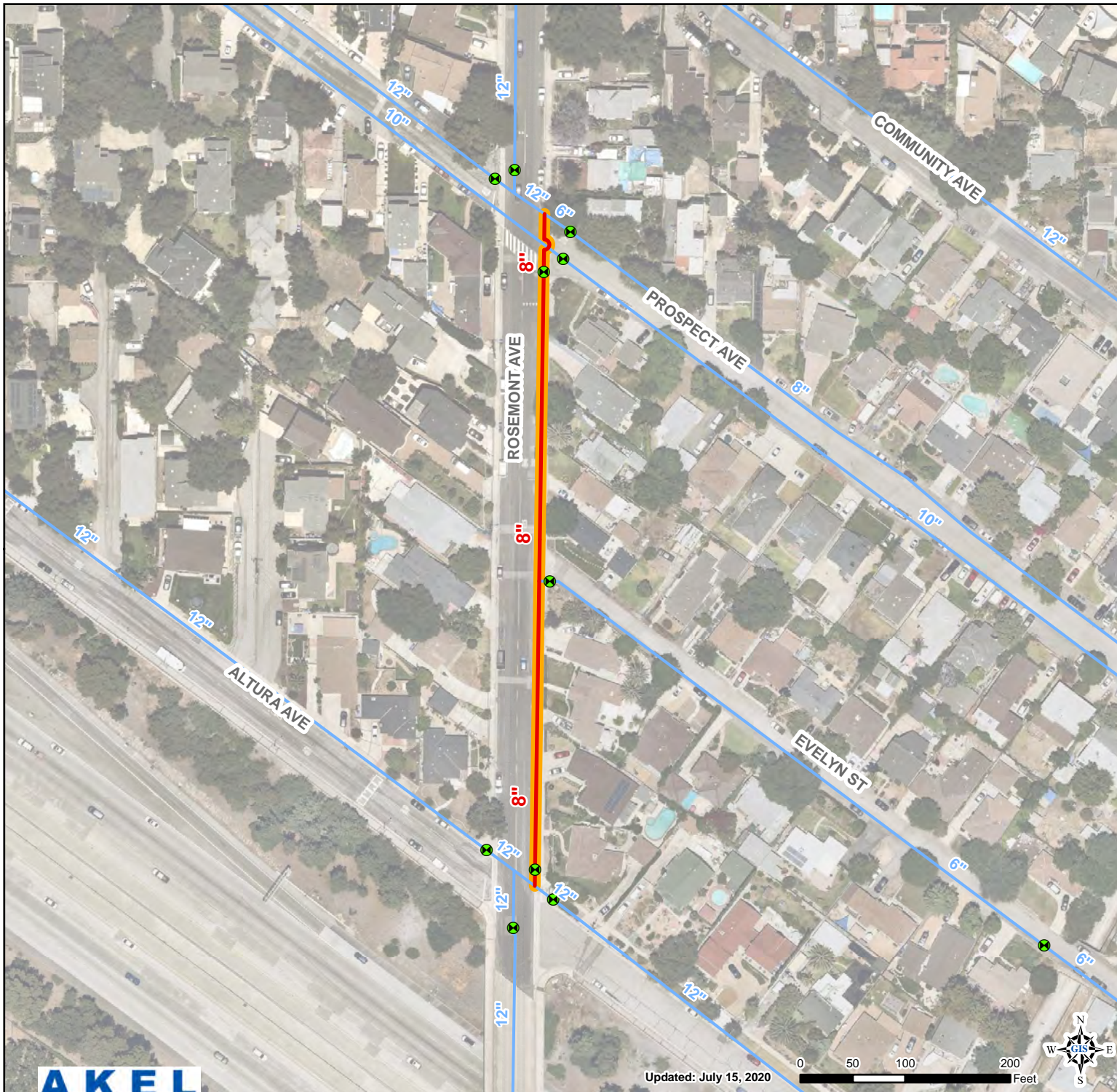
- Pipeline to Replace
- Replacement Segment ID**
ID: Length, Year Inst., Material
- NA: 1,300ft, NA, STD
- Existing System**
- Tanks
- Pump Stations
- Wells
- Valves
- Active Mains

Project 1 Replacement
Total Length: 1,300 ft





PRELIMINARY

Year 1 - FY 20/21
Project 1
Pipeline Replacement
Schedule
Crescenta Valley Water District





Legend

- Pipeline to Replace
- Replacement Segment ID**
ID: Length, Year Inst., Material
- 689: 650ft, 1929, STD
- Existing System**
-  Tanks
-  Pump Stations
-  Wells
-  Valves
- Active Mains

Project 2 Replacement
Total Length: 650 ft

PRELIMINARY

Year 1 - FY 20/21
Project 2
Pipeline Replacement
Schedule
Crescenta Valley Water District

